

- Suggested story concept
- Wrote story and edited instructions and diagrams

*If it could be
Everyone would have
A cabin by the sea
From which to watch
The moon rise and fall
The tide ebb and flow
The sun come and go*

*Everyone would have
A paint-peeled deck chair
From which to hear
The lapping at the shore...*

– From “Bowyer Island – Innisfree,”
by Ann Mortifee

Sitting Pretty

DESIGNED BY JON GILLETTE

TEXT BY JO CALVERT

Create a classic chair – or, better still, make a pair – then sit back and contemplate the summer sky in comfort.

YOU NEED (for each):

Four 8-ft lengths of 1x2" clear hardwood, such as maple or birch

Four 5/16-in flat washers

Four 5/16-in carriage bolts, 1 1/2-in long, with four 5/16-in nylon lock nuts

Ten 1 1/2-in wood screws

Saw, hammer, chisel, plane, drill with assorted bits including 3/4-in spade bit, screwdriver and pliers

Set square and tape measure

Sandpaper in various grades

Varnish and brush, or wax and clean rag

Piece of sturdy canvas, 52 x 18 in

Matching thread

**Nominal size; actual size will be smaller.*

CUT LIST:

Note: With pencil, label each piece.

2 pieces A, each 22-in long

2 pieces B, each 48-in long

2 pieces C, each 18-in long

1 piece D, 23 1/2-in long

2 pieces E, each 33-in long

2 pieces F, each 20 1/2-in long

TO MAKE:

Note: Refer to diagrams when cutting, drilling and assembling.

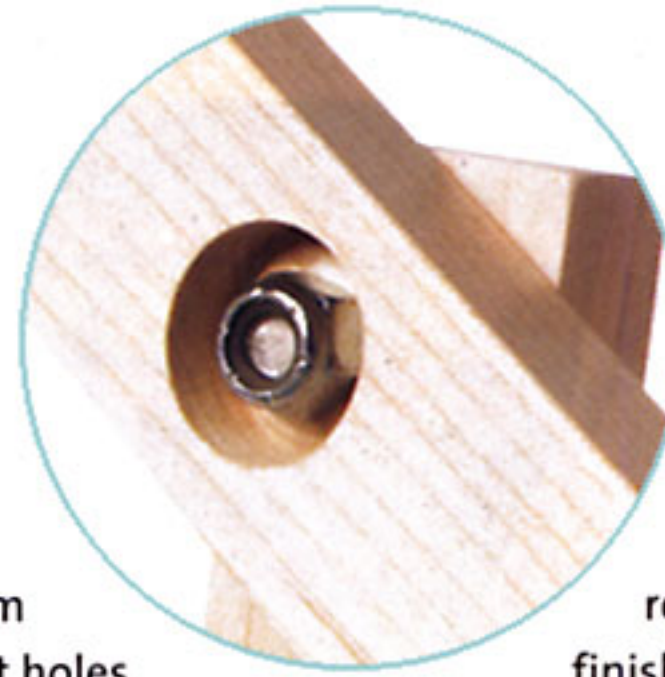
1 Fabric sling: Press under 1/4 in, then 1/4 in again, along each long edge of fabric; edgestitch along both folds. Press under 1/2 in, then 2 3/4 in, along each short edge to form sleeve for wood; starting and ending with machine-zigzag bar tack to reinforce, edgestitch along first fold, then topstitch 1/4 in out from that.

2 Using saw to cut sides and chisel to cut bottom of each, make 3/8-in deep notches in A, D and F. With saw, cut three 3/4-in deep grooves in each E. With plane, round off 1 long edge along unnotched side of 1 A and 1 F.

3 Measure and mark bolt holes. With spade bit, countersink 3/8-in deep hole to fit nut, into inner broad side of each B for each top bolt, then into inner broad side of each E for each bottom bolt. With 5/16-in bit, drill bolt holes right through and perpendicular to broad sides of B, C and E. Sand all pieces smooth, then varnish or wax as desired.

4 With planed edge at outside front, slip rounded A through top sleeve on fabric and rounded F through bottom.

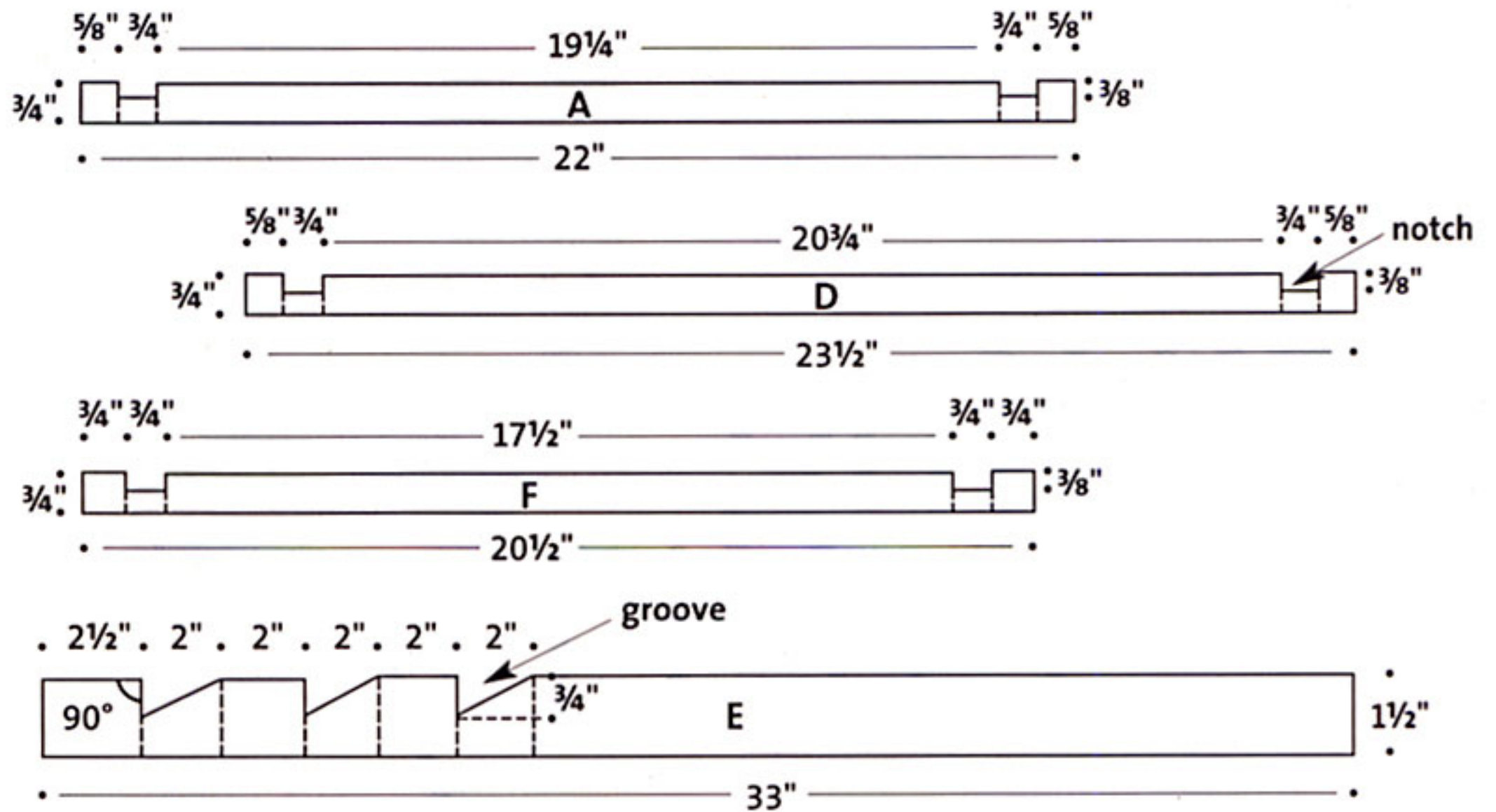
5 On flat surface, fit notches together to assemble rectangle with Es and Fs. Centred over each notch, drill 1 1/2-in deep



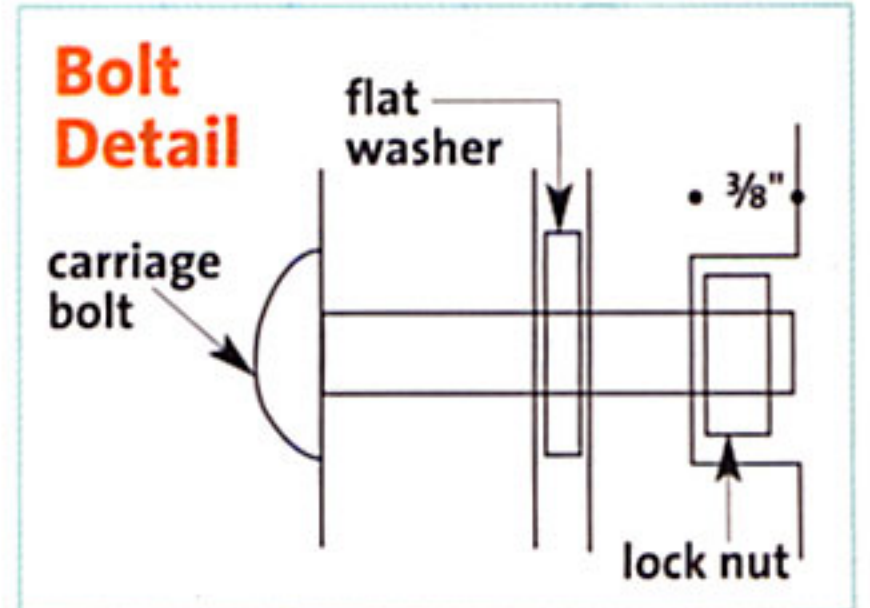
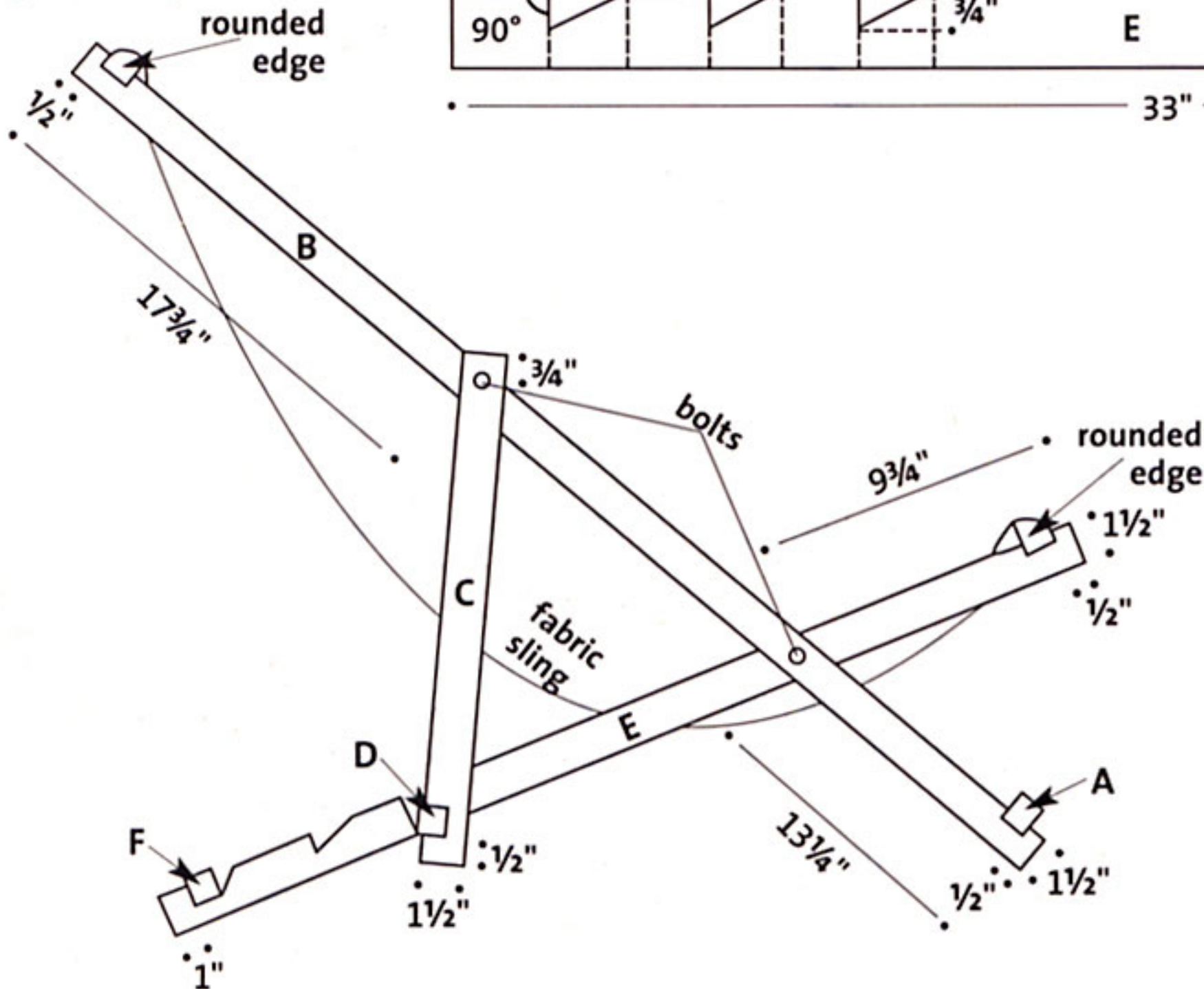
screw hole through F; with larger bit, countersink hole to accommodate screw head, then screw together (assembled rectangle must lie flat or finished chair frame will be

warped; if necessary, adjust tightness of screws). In same manner, assemble rectangle with As and Bs, drill through each A, and screw together. In same manner, assemble U-shape with Cs and D, drill through D, and screw together. **6** Bolt chair frame together, leaving joints slightly loose so frame folds up. ●

Cutting Diagram



Assembly Diagram (side view)



FOR SHOPPING INFORMATION, SEE PAGE 196